

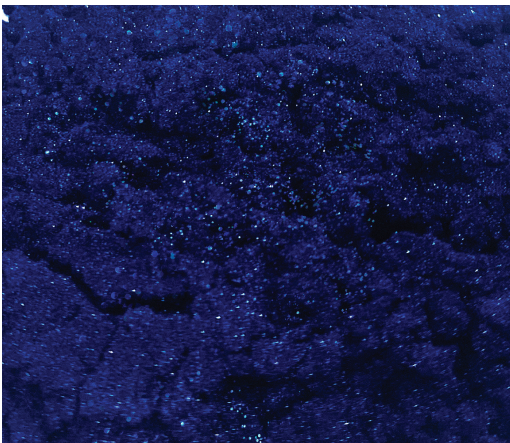
TAKE ADVANTAGE of the Color of the Year 2020

Our Highlight - CosPearl Dark Blue



Classic Blue is the color of the year chosen by the renowned Pantone Color Institute for 2020. Timeless, of simple elegance, calming, radiating reliability and security – this is the new fashion color.

CosPearl Dark Blue – The Perfect Choice to be on Trend



Our natural mica-based pigment perfectly matches this relaxing and refreshing color trend. It conveys poise and elegance in a deep, shimmering, powerful color that is reminiscent of the azure sea or a cool evening sky.

This rich, truly intense color luster pigment is the perfect choice for enhancing expressive and emotional blue tones.

Depending on the background color, the pigment will display a range of hues from a fresh cornflower blue to an intense royal blue color.

The amazingly brilliant color effect is based on the combination of a pearlescent pigment with a colored pigment. The mass tone of the added colorant is enhanced by the reflection of the interference pigment which results in a particularly concentrated color effect.

A Stunning Blue for Irresistible Cosmetic Applications

As an integral part of the 2020 fashion year, blue also opens up an exciting direction for a wide variety of cosmetic applications. The calming color can convey peace of mind, reliability, clear thinking and new perspectives.



Blue eye makeup

will present in a deep, strong shade that recalls the depths of the ocean. Whether as an eyeshadow, mascara, as an eyeliner or a classic kohl eye pencil – there are many ways to create a rhapsody in blue in eye makeup.

Blue Nails

can be enchanting in a beautiful midnight blue with a very fine blue shimmer that has a slightly metallic look and an incredible magnetic depth. For all those who love blue and make it their color.



COSPEARL

COSMI 6225PB DARK BLUE



Optical Features	Special Product Features
Intense blue color	Gleaming deep blue pearlescent, which varies depending on the background color from a fresh cornflower blue to a rich midnight blue
Brilliant shimmer and gloss	Created by the interplay of color depth and interference effect
Very good hiding power	Due to the combination of a pearlescent pigment with a colorant
	Compliance with all cosmetic regulations

ORDERING INFORMATION

Product	Color	Package size
COSMI 6225PB Dark Blue	Dark blue luster	samples, 5 kg, 25 kg

PRODUCT INFORMATION

Composition*	Chemical Name	CAS no.
	Mica	12001-26-2
	Titanium dioxide (TiO ₂)	13463-67-7
	Ferric ferrocyanide	14038-43-8
Particle size distribution	10 - 60 µm	
pH value	4.0 - 9.0	
Oil Absorption Value	70 - 90 g oil/100g	
Density	2.8-3.4 g / cm ³	

*detailed values and testing procedures can be found in our specification.

PLEASE NOTE:

This product is not recommended for the use in lipsticks and is not alkali resistant.

Information on technical applications is provided to the best of our knowledge within the scope of the possibilities open to us but is without obligation. Current laws and regulations must be observed at all times. This also applies in respect of any protected rights of third parties.

Our suggestions do not relieve our customers of the need to test our products at their own responsibility to establish whether they are suitable for the intended purpose.

Quotations from our literature are only permitted after prior written authorization, and only if the source is cited.

Fujian Kuncai Material Technology Co. Ltd.,
Haicheng Rd., Yuanhong Investment Zone, Fuqing
ZIP: 350314, China
T: +86(0)59185588067
Mail: coco.ao@fjkuncai.com
www.fjkuncai.com

Kuncai Europe B.V.
Linie 506, 7325 DZ Apeldoorn,
The Netherlands
T: +31 (0) 55-2100000
Mail:
customerservice@kuncaieurope.com
www.kuncai-pigments.com

Kuncai Americas LLC,
130 E. Wilson Bridge Rd Suite 210, Worthington
OH 43035, USA
T: +1 (0) 614-547-7424
Mail: customerservice@kuncaius.com
www.kuncai-pigments.com