

COLORFUL BLACK

Aurora Black Pigments

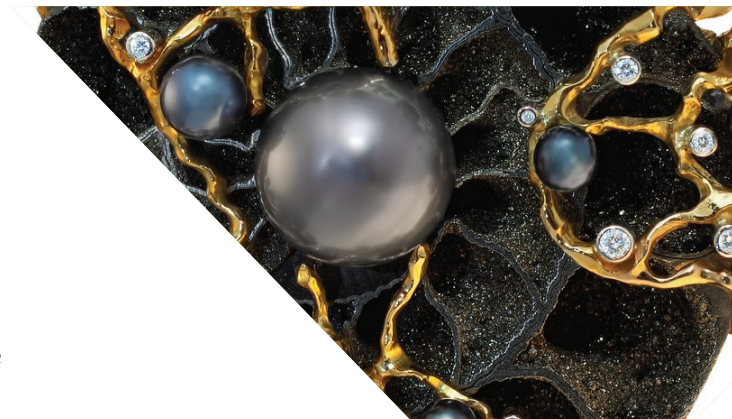


Inspired by the Beauty of Black Tahitian Pearls

Hardly anyone can resist the magnificent dark South Sea pearls, grown in the Pinctada margaritifera shell. They are enchanting with their unusual and, at the same time, unique dark play of colors.

Their color spectrum ranges from black and silver-gray through countless shades of green and gold to bronze and aubergine.

Discover our Aurora Black Pigments, based on synthetic mica. Modeled on the beauty of black pearls, they are an expressive and charismatic choice for dark cosmetic formulations that turn decorative cosmetics into real highlights.



Smokey Eyes - Breathtaking and Dramatic

The smokey eyes technique is seductively beautiful and a real beauty classic. Dark, opaque shades for smoldering, smokey eyes are a must for any party make-up or special occasion. Create your special palette for this special look with harmonizing colors from the Aurora Black color portfolio.

Lipstick - Black is Beautiful

Dark colors with a subtle metallic shimmer are also very popular as lipsticks. Black lipstick looks unusually glamorous, particularly if it comes with a slightly tinted undertone. Dial up the drama with a hint of dark burgundy or plum, or go for a minimalist black lip liner.

Nail Passion - Colorful Black and Dark Metallics

Put nails in the limelight and give black and any other dark nail polish a touch of magic color and the mesmerizing shimmer of Tahitian pearls. Dark nail polish is not only timelessly elegant, it can also be worn with almost any outfit. Aurora Black pigments open up a range of completely new color interpretations in this sector.



ORDERING INFORMATION

Product	Color	Package size
COSMI 11400 Ash Gray	Gray pearlescent	sample, 1kg, 5 kg, 25 kg
COSMI 11401 Black Pearl	Black pearlescent	sample, 1kg, 5 kg, 25 kg
COSMI 11402 Black Pearl L	Black pearlescent	sample, 1kg, 5 kg, 25 kg
COSMI 11403 Black Gold	Black Gold pearlescent	sample, 1kg, 5 kg, 25 kg
COSMI 11404 Black Red	Black Red pearlescent	sample, 1kg, 5 kg, 25 kg

PRODUCT INFORMATION

Composition*/ Chemical Name	CAS no.	COSMI 11400	COSMI 11401	COSMI 11402	COSMI 11403	COSMI 11404
Synthetic Fluorophlogopite	12003-38-2	X	X	X	X	X
Titanium Oxide (TiO ₂)	13463-67-7	X	X	X	X	
Iron (III) Oxide (Fe ₂ O ₃)	1309-37-1					X
Ferrosoferric Oxide (Fe ₃ O ₄)	1317-61-9	X	X	X	X	X
Particle size distribution (µm)		10 -60	5 - 25	10 - 45	10 - 60	10 - 60
pH value		4.0 - 9.0	4.0 - 9.0	4.0 - 9.0	4.0 - 9.0	4.0 - 9.0

*detailed values can be found in our specification.

Information on technical applications is provided to the best of our knowledge within the scope of the possibilities open to us but is without obligation. Current laws and regulations must be observed at all times. This also applies in respect of any protected rights of third parties.

Our suggestions do not relieve our customers of the need to test our products at their own responsibility to establish whether they are suitable for the intended purpose.

Quotations from our literature are only permitted after prior written authorization, and only if the source is cited.

Fujian Kuncai Material Technology Co. Ltd.,
Haicheng Rd., Yuanhong Investment Zone, Fuqing
ZIP: 350314, China
T: +86 (0) 4001-603826
Mail: deng@fjkuncai.com
www.fjkuncai.com

Kuncai Europe B.V.
Linie 506, 7325 DZ Apeldoorn,
The Netherlands
T: +31 (0) 55-2100000
Mail: customerservice@kuncaieurope.com
www.kuncaieurope.com

Kuncai Americas LLC,
130 E. Wilson Bridge Rd Suite 210, Worthington
OH 43035, USA
T: +1 (0) 614-547-7424
Mail: customerservice@kuncai.com
www.kuncai.com