

# JUNGLE BEAT

Lush Tropical Greenery

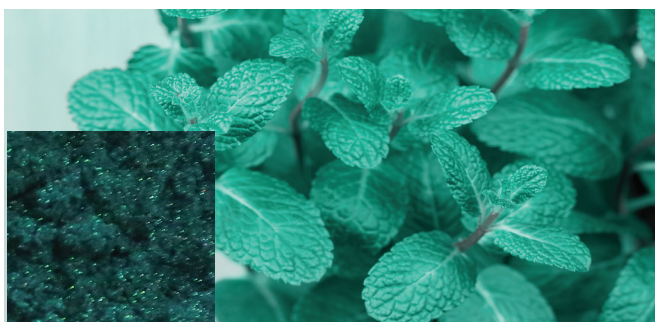
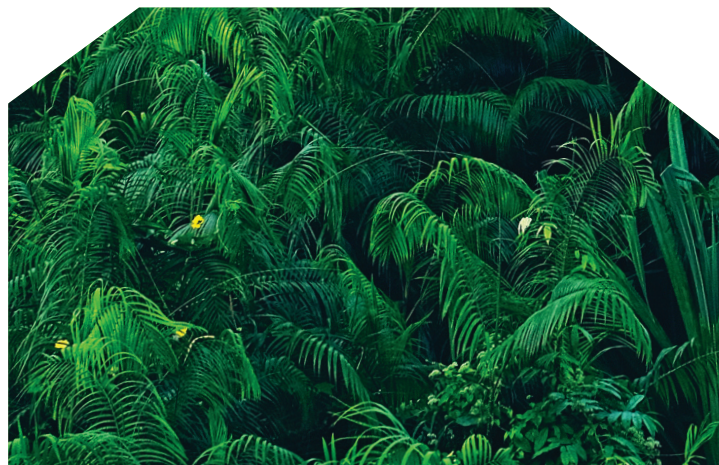


## A Luxuriant Atmosphere with a Natural Look

Green is back with its self-confident color charisma whether on its own or interacting with other hues. The lush greenery of a tropical jungle provides a welcome breath of fresh air to create peaceful relaxing moments.

Based on three different substrates, each of our green pearlescent pigments is characterized by a unique green color shade which offers room for a wide range of interpretations, whether for color cosmetic or personal care products.

Inspired by the brilliance of nature, these vibrant pigments are well suited to crisp and wet gloss finishes, but also capture the feeling of a tropical jungle after a warm rain.

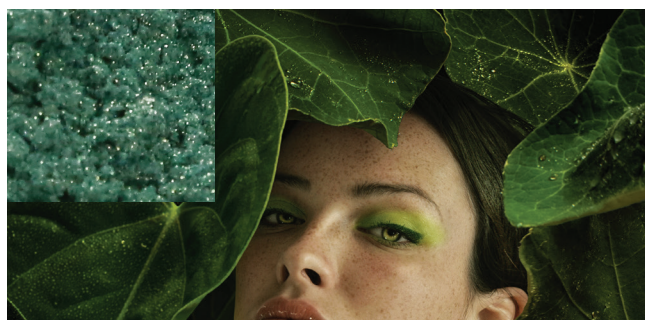


## CosPearl - COSMI 6735PB Tea Green

This rich, truly intense CosPearl color luster pigment is based on natural mica and is enhanced with an inorganic colorant that delivers an expressive minty green body color, reminiscent of a blend of green tea and spearmint leaves. A truly refreshing surprise!

## Aurora - COSMI 48305G Neo Mint

Synthetic mica is the substrate of choice for this warm, positive green Aurora effect pigment combined with synthetic dyes. Hopeful and tender like the first shoots and grasses of spring, such is the essence of this mass tone. The interplay of color depth and interference effect makes this glamorous green gleam with a pronounced metallic sheen.



## BoroStar - COSMI 925-R6 3D Twinkling Diamond Green

Sparkle and fascinating multicolor highlights characterize this third green pigment based on calcium aluminum borosilicate. Just as the light of sunbeams is refracted in the droplets that remain on leaves after a tropical rain shower, so this very transparent and fresh green glitters with high reflectivity and superb chroma.

## ORDERING INFORMATION

Product	Color	Package size
COSMI 6735PB Tea Green	Green pearlescent	samples, 1kg, 5 kg, 25 kg
COSMI 48305G Neo Mint	Green pearlescent	samples, 1kg, 5 kg, 25 kg
COSMI 925-R6 3D Twinkling Diamond Green	Green pearlescent	samples, 1kg, 5 kg, 25 kg

## PRODUCT INFORMATION

Composition*/ Chemical Name	CAS no.	COSMI 6735PB	COSMI 48305G	COSMI 925-R6
Mica	12001-26-2	X		
Synthetic Fluorophlogopite	12003-38-2		X	
Calcium Aluminum Borosilicate	65997-17-3			X
Titanium Oxide	13463-67-7	X	X	X
Iron (III) Oxide	1309-37-1	X		
Tin Oxide	18282-10-5	X	X	X
Ferric Ferrocyanide	14038-43-8	X		
FD&C Yellow 5	1934-21-0		X	
FD&C Blue 1	3844-45-9		X	
Particle size distribution (µm)		10 -60	10 - 60	10 - 60
pH value		4.0 - 9.0	4.0 - 9.0	9.0 - 11.0

\*detailed values can be found in our specifications

Information on technical applications is provided to the best of our knowledge within the scope of the possibilities open to us but is without obligation. Current laws and regulations must be observed at all times. This also applies in respect of any protected rights of third parties.

Our suggestions do not relieve our customers of the need to test our products at their own responsibility to establish whether they are suitable for the intended purpose.

Quotations from our literature are only permitted after prior written authorization, and only if the source is cited.